

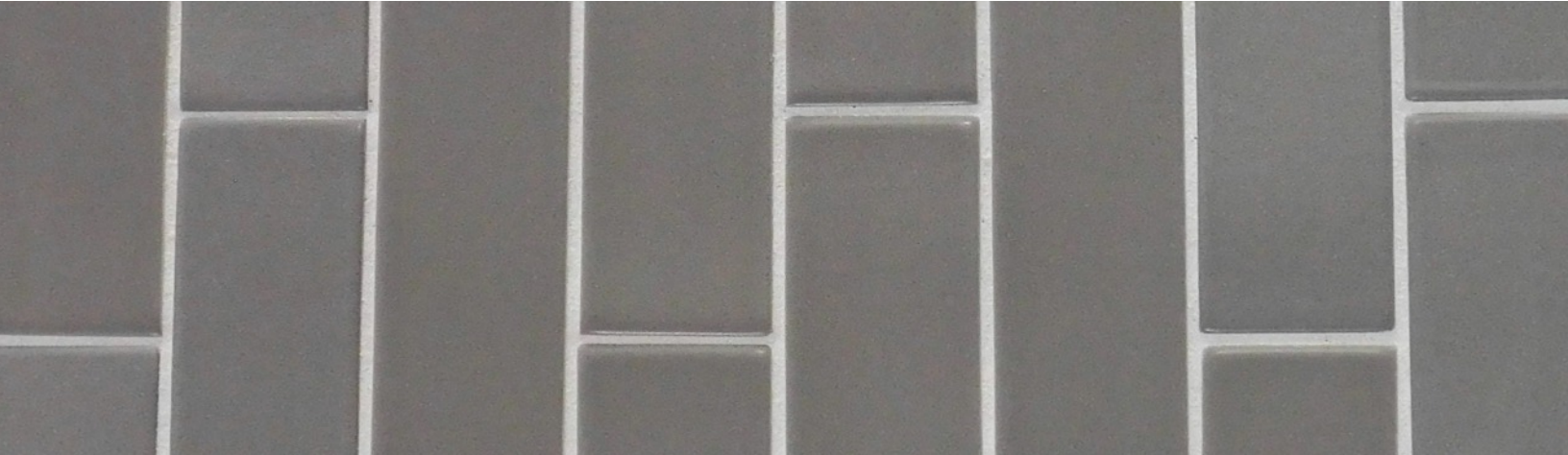
Affinity



TRIKEENAN

INVEST IN BEAUTY™

ESSENTIALS COLLECTION



Smolder in a vertical offset pattern gives a modern touch in any room or setting.

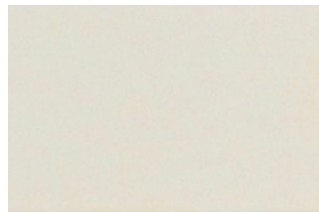
Affinity Essentials offers sophistication and warmth with a soothing palette of ceramic colors. From clean whites to smokey grays, the spectrum of glazes will add beauty to any interior residential or commercial design. This streamlined collection of artisan tiles is traditional with simple elegance in neutral tones. With quick ship options and enhanced lead times, you are sure to find a stylish solution for your next project.

COLORS:



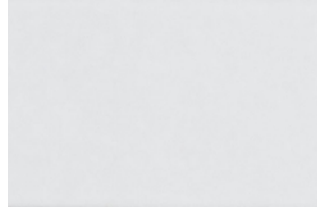
Bittersweet

A warm brown, like tile coated in melted chocolate



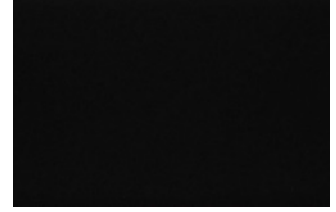
Custard

Creamy off-white, a warm and airy addition to any palette



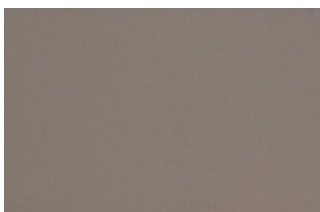
Frosting

A true white, easily paired with any color scheme



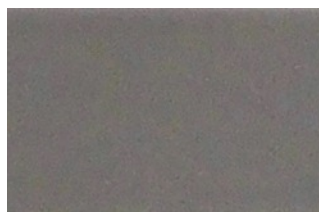
Licorice

A true black, sophisticated, clean, and always in style



Rye

A neutral taupe that pairs with any palette



Smolder

A green spectrum gray with the feel of smooth stone



Steam

Subtle, sophisticated gray with a soft blue hue



Whip Cream

A cool white, not stark but soft and visually inviting

Affinity



TRIKEENAN

INVEST IN BEAUTY™

ESSENTIALS COLLECTION

SIZES:

Quick Ship* Sizes: 2x8, 1-½x12, 3x12

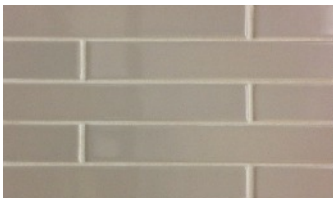
Standard Production: 3x3, 3x6, 3x9, 4x4, 4x8, 4x12, 6x6, 6x9, 6x12, 8x8, 6x9 Hex, Ebb and Flow

Trim Options 6" Straight Run: Pencil Liner, Flat Ogee, Chair Rail and Quarter Round

*Contact your local sales manager or the factory to check current stock.

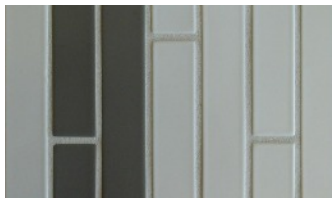
INSTALLATION INSPIRATION:

OFFSET



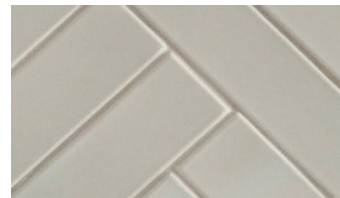
Rye

VERTICAL STAGGER



Smolder and Frosting

DOUBLE HERRINGBONE



Custard

HANDCRAFTED VARIATION:

Trikeenan products are hand-mixed, hand-formed, and hand-glazed or sprayed. Our tiles are formed from wet clay and finished, glazed and fired to 2012 degrees F. Due to the nature of handmade tile, glazes will vary slightly in color, density and surface quality from tile to tile and lot to lot. Range can be affected by air circulation, tile placement within the kiln and whether a complete order fits into a firing cycle or must be fired in several cycles. Some glazed tiles may be susceptible to crazing; this will not affect their suitability in any way and is not a defect in the tile. It is important to understand that while our samples provide a representation of our glaze ranges, variations are an inherent characteristic of the beauty of handmade tile. Therefore, the final product may not be an exact replica of the samples displayed. Affinity tiles are produced and packed to our specifications. Custom orders may be produced upon request. Contact customer service for custom color information.

SPECIFICATIONS:

Affinity conforms to ANSI 137.1 as Special Purpose Tile. Affinity is recommended for interior vertical surfaces in all residential and commercial applications. These applications may include bathroom walls, shower walls, vanity tops, kitchen back splashes, and walls in any part of the house. Affinity tile conforms with ASTM C-373 for absorption benefits and ASTM C-650 for resistance to chemicals.* Commercial usage can include any vertical surface that is not exposed to heavy use. Affinity tile is not recommended for areas of standing water or areas exposed to high abuse. For design inspirations and installation recommendations please contact your Regional Sales Representative or Trikeenan Customer Service.

**All glazes slightly affected.*